



## High Road , London, N22 6BB

Nestled on the bustling High Road in London, this charming second-floor flat offers a delightful living space perfect for individuals or couples seeking a vibrant urban lifestyle. The property features a well-proportioned reception room, providing an inviting area for relaxation or entertaining guests.

The flat comprises one comfortable bedroom, ideal for restful nights, and a modern bathroom that caters to your daily needs. Although the property type is not specified, its location and layout suggest a cosy and practical living environment.

With its proximity to local amenities, shops, and transport links, this flat is perfectly positioned for those who wish to enjoy the best of city living. As you are a rental client this opportunity, this property presents a wonderful chance to immerse yourself in the dynamic atmosphere of London.

Do not miss the opportunity to make this flat your new rental home in one of the capital's most sought-after areas.

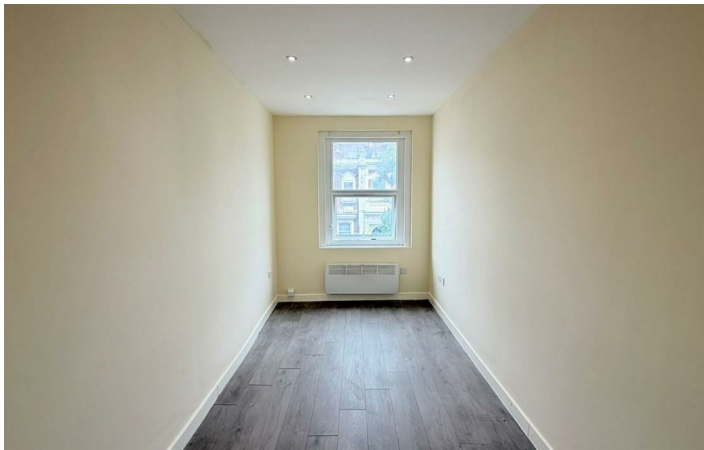
**£1,700 Per Month**

# High Road

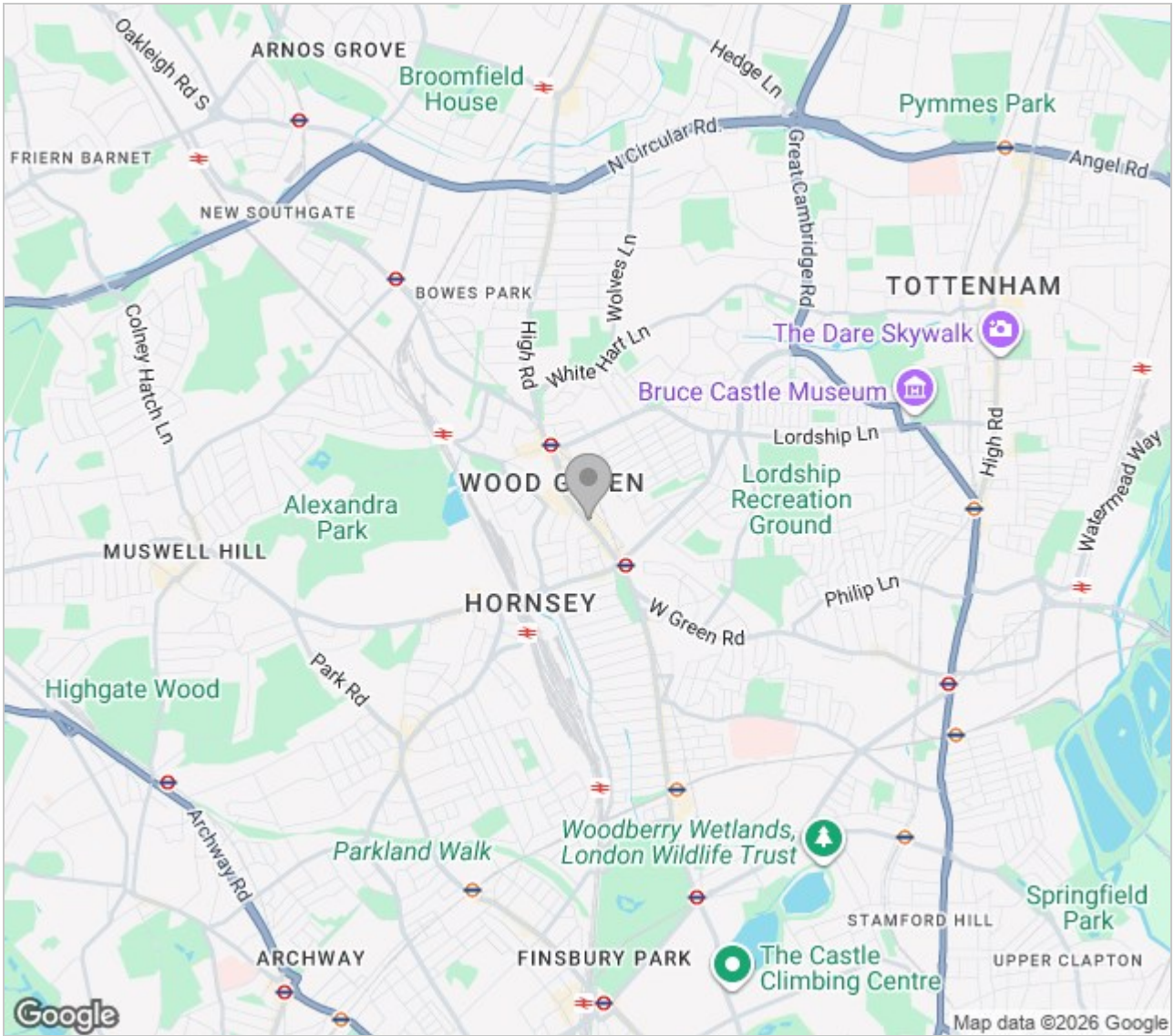
, London, N22 6BB



Directions



# Area Map



Energy Efficiency Rating		Current	Potential
Very energy efficient - lower running costs	(92 plus) <b>A</b>		
	(81-91) <b>B</b>		
	(69-80) <b>C</b>		
	(55-68) <b>D</b>		
	(39-54) <b>E</b>		
	(21-38) <b>F</b>		
	(1-20) <b>G</b>		
Not energy efficient - higher running costs			
<b>England &amp; Wales</b>		EU Directive 2002/91/EC	

Environmental Impact (CO <sub>2</sub> ) Rating		Current	Potential
Very environmentally friendly - lower CO <sub>2</sub> emissions	(92 plus) <b>A</b>		
	(81-91) <b>B</b>		
	(69-80) <b>C</b>		
	(55-68) <b>D</b>		
	(39-54) <b>E</b>		
	(21-38) <b>F</b>		
	(1-20) <b>G</b>		
Not environmentally friendly - higher CO <sub>2</sub> emissions			
<b>England &amp; Wales</b>		EU Directive 2002/91/EC	

These particulars, whilst believed to be accurate are set out as a general outline only for guidance and do not constitute any part of an offer or contract. Intending purchasers should not rely on them as statements of representation of fact, but must satisfy themselves by inspection or otherwise as to their accuracy. No person in this firm's employment has the authority to make or give any representation or warranty in respect of the property.



5 Turnpike Parade Green Lanes, London, N15 3EA  
 Tel: 0208 888 3556 Email: [info@easypropertieslondon.co.uk](mailto:info@easypropertieslondon.co.uk)  
[www.easypropertieslondon.co.uk](http://www.easypropertieslondon.co.uk)